

SOLANGE KNOWLES

SURFACE

ISSUE 145
JANUARY/FEBRUARY 2018

SPACES AND PLACES



Top 10: Kitchen and Bath



For our inaugural Standouts feature, in which Surface's editors review countless objects in search of the top 10 most artful and forward-looking new products in a category, we tackle the hardest-working rooms in the home: the kitchen and the bathroom. As each piece that follows proves, the quotidian rituals of cooking and washing up can be a surprisingly refined, inspiring experience.

BY TIFFANY JOW

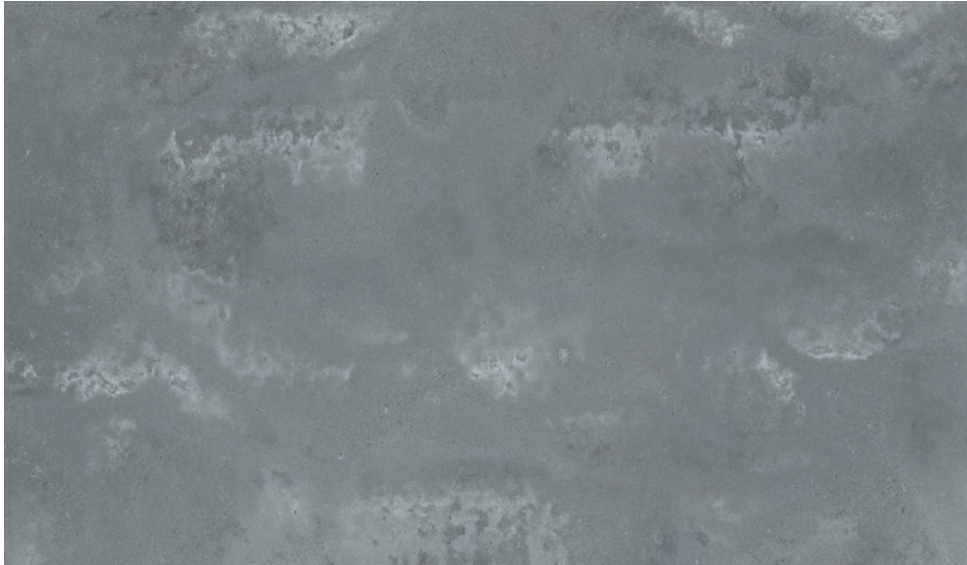
01 Equipped with a foot warmer, remote control, and motion-activated seat, Kohler's Numi Intelligent toilet redefines the way we go. Built-in Bluetooth speakers and ambient lighting—in seven colors—enhance this next-level john.

kohler.com

02 Designed by Michael Gottschalk using Blu Bathworks' signature Bluestone—a durable, non-porous material composed mainly of quartzite—the Fini 1 bathtub's seamless shape has a natural, stonelike texture.

blubathworks.com

STANDOUTS



08



09

08

Caesarstone's cool, confident Rugged Concrete quartz countertop is marked by its rich gray base with cloud-shaped splotches of white.

caesarstoneus.com

09

Porcelanosa studied more than 1,500 different trees to create its Desert Nebraska Coffee porcelain tile, which mimics the knots and whorls of real hardwood with striking precision.

porcelanosa-usa.com

10

Arizona-based designer Daniel Germani created Orix, one of four colors in Cosentino's Dekton Industrial collection. Made of inorganic raw materials found in glass, porcelain, and quartz, its blue-gray and green surface evokes eroded concrete.

dekton.com



DANIEL GERMANI
DESIGNER, DEKTON
INDUSTRIAL COLLECTION
(COSENTINO)

“There’s something to be said for finding beauty in the ugly. Exploring materiality in decay is what inspired the development of the Industrial series. It’s about appreciating materials for what they are and embracing their organic decomposition. The rich, intricate patterns of these processes can be paired beautifully with modern furniture and design. The current offering of the series only scratches the surface—we’re exploring new metal- and cement-inspired designs to further expand the collection.”